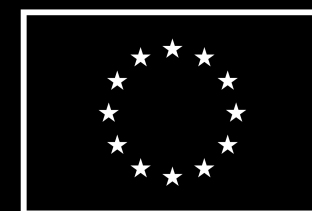


# AI & ROBOTICS ESTONIA

[aire-edih.eu/en](http://aire-edih.eu/en)



Co-funded by  
the European Union

**AI** &  
**ROBOTICS**  
**ESTONIA**

Nicolas Schulz



# How to avoid the PoC Graveyard?

Artificial Intelligence Center  
Hamburg e.V. (ARIC)



Supported as part of the European Digital Innovation Hub (EDIH)



Co-funded by  
the European Union



# Who am I?



**Nicolas Schulz, AI Manager**  
European Digital Innovations Hub (EDIH)



We help small to medium sized companies with their AI strategy and build Proof of Concepts (PoC) as Test before Invest Service.



# Agenda

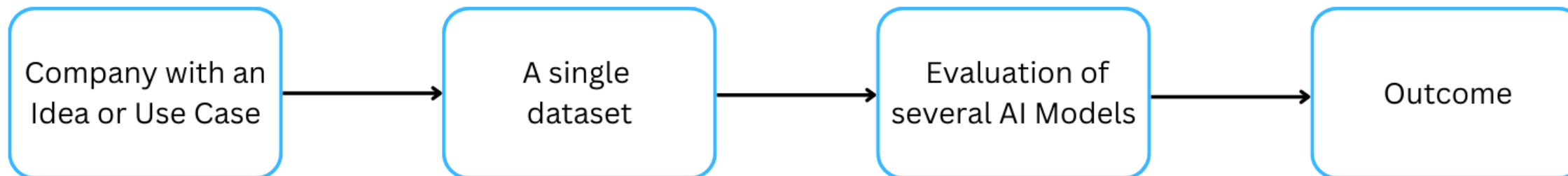
PoC Blueprint in AI

PoC vs. Machine Learning Product

How can we bridge the gap?

Q&A

# What really is a Proof of Concept?



Assume we have achieved the desired outcome.

Wrong interpretation:

→ The company has a new AI tool ready to use

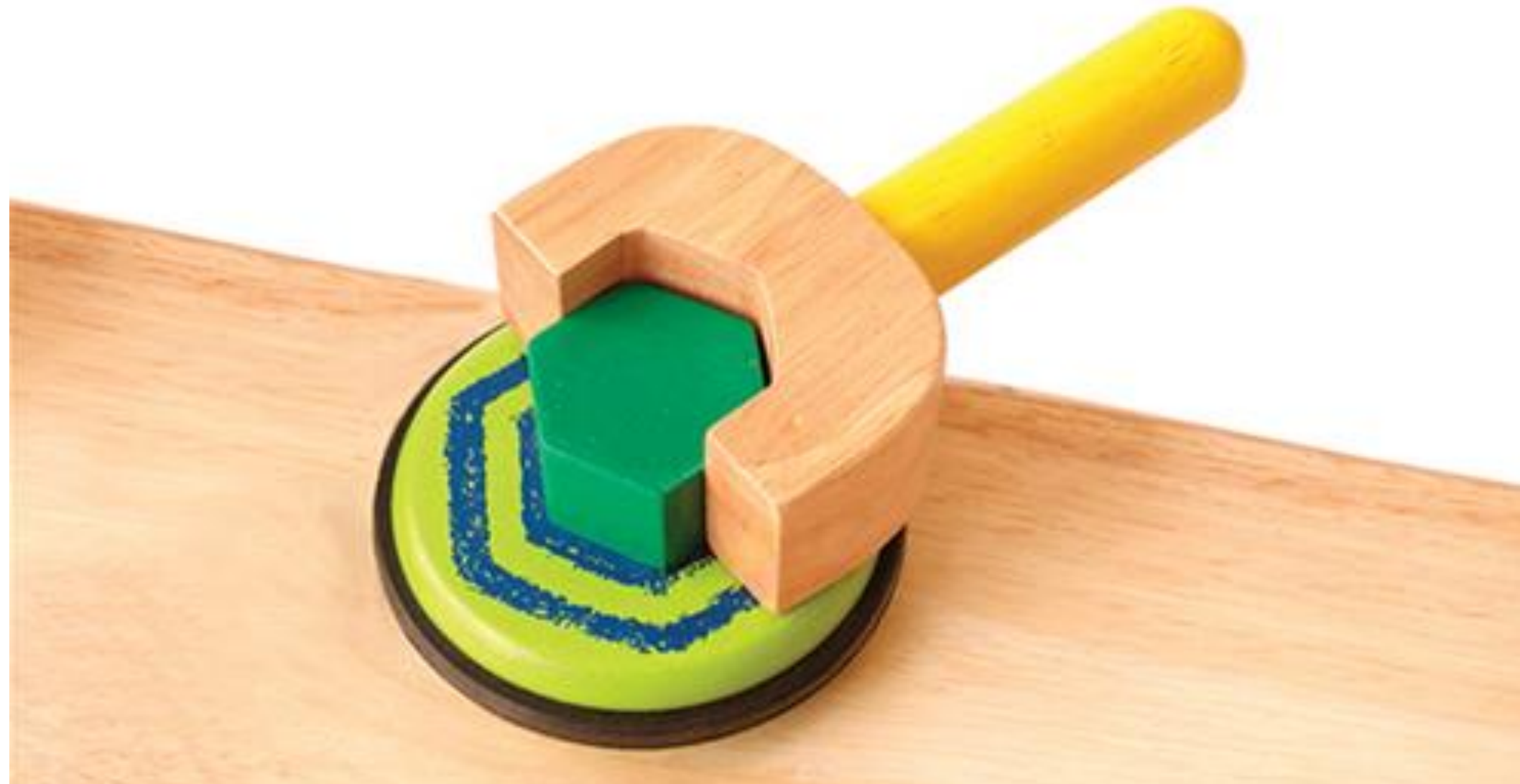
Right interpretation:

→ On this dataset, we found method X to be performant

# POC – A TOOL?



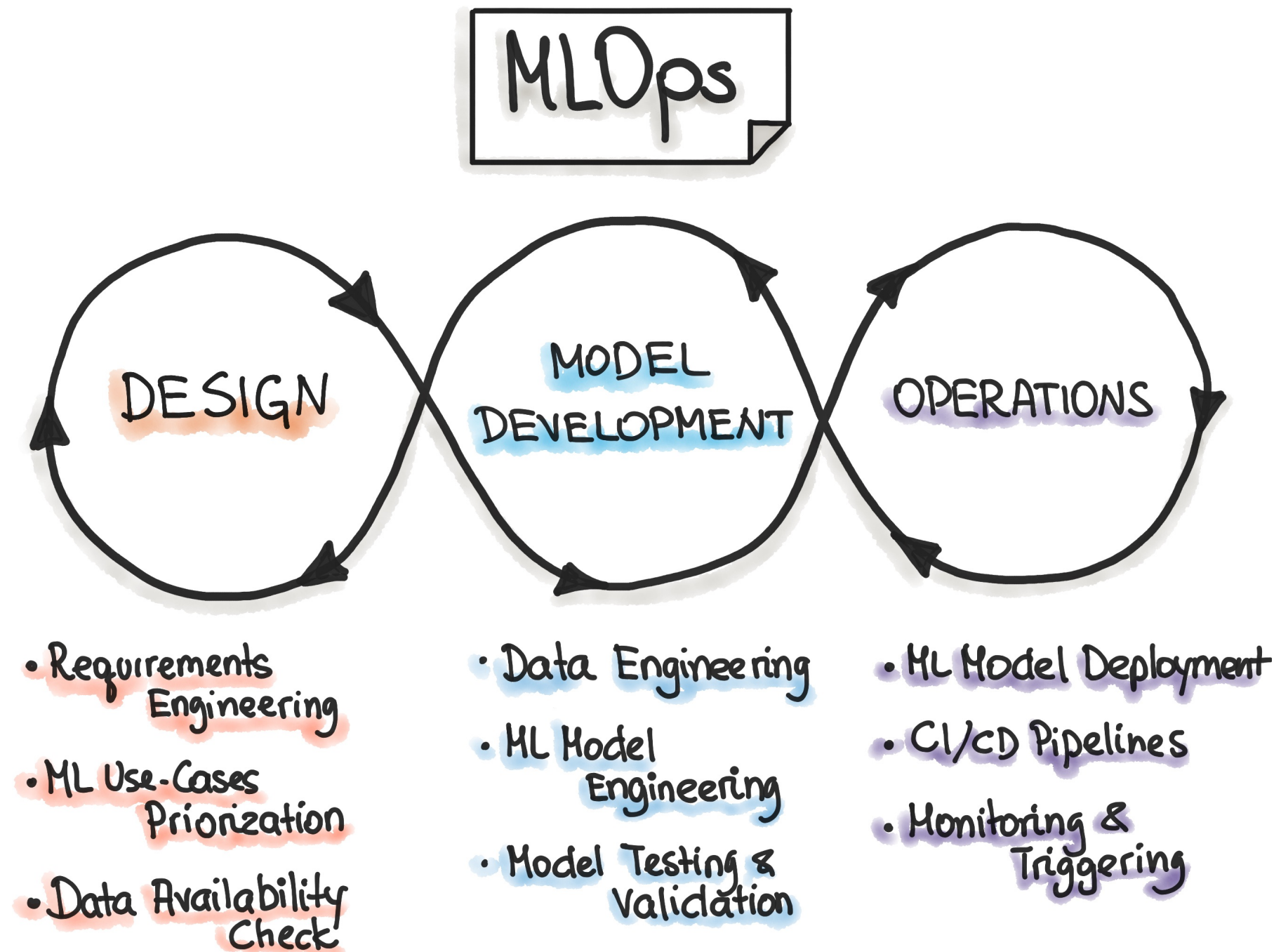
# POC – A PROTOTYPE!





# Why is it not a finished Machine Learning Product?

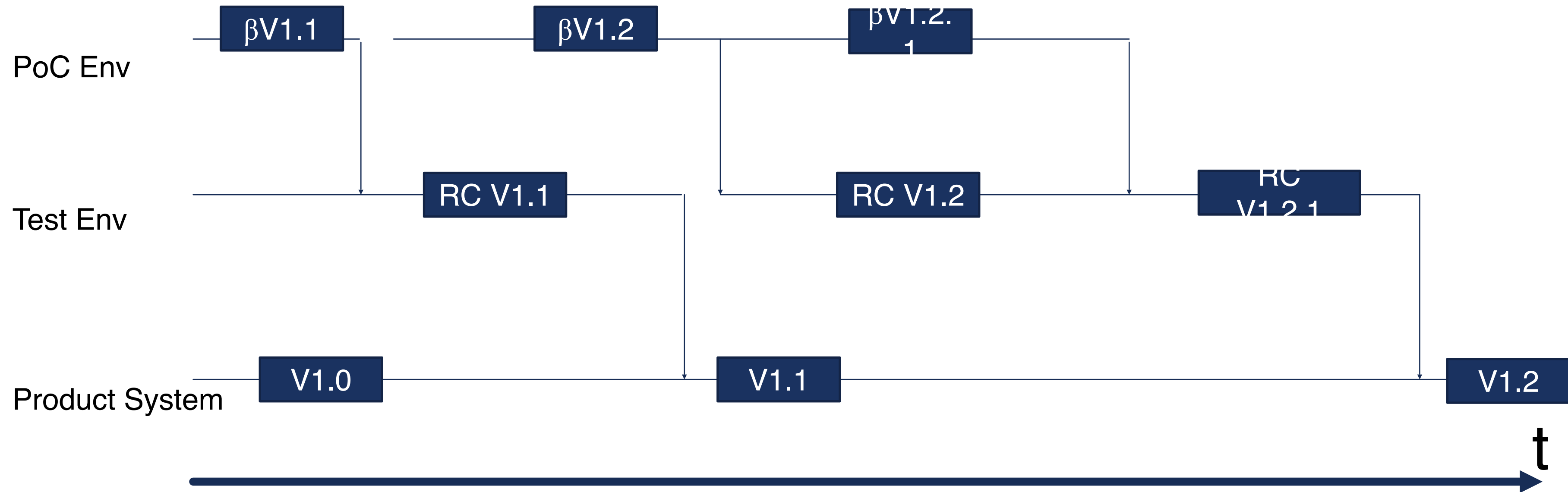
- Integrated prediction pipeline
- Requires data availability
- Model Deployment
- Needs monitoring and continuous testing and validating
- Under continuous development



# How can we bridge the gap – Practical Tips

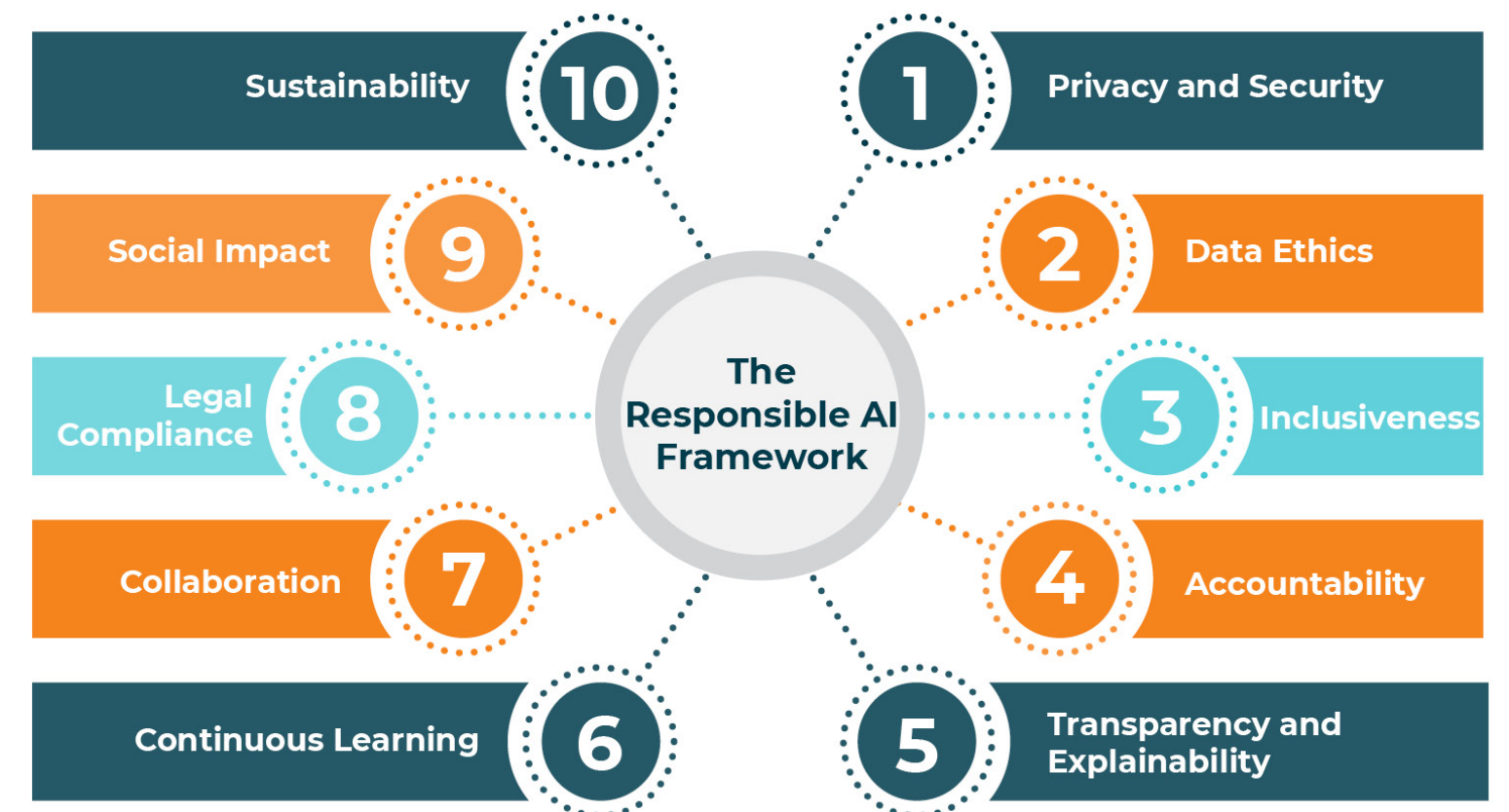
- **Expectation Management**
  - Clarify the role of a PoC in the development pipeline
  - Premature use of a PoC in production can lead to damage
- **Facilitate conversation between in-house IT departments and PoC Team**
  - If the PoC is successful, what is required for integration?
  - Work with checklists consisting of the steps needed to implement a PoC into your infrastructure
- **Establish separate development environments for a successful project outcome**

# Seperate Development Pipelines



# How can we bridge the gap – Practical Tips

- **Build close to the target infrastructure and customer demands**
  - Think about target IT systems while developing (Programming Language, Cloud Provider etc.)
  - Think about scalability and robustness of the ML Model – Could it handle varying requests?
- **Keep Best Practices in mind while developing the PoC**
  - Compliance & data privacy regulations
  - Usage of Responsible AI frameworks



# Take Home Message

- A PoC **is not a product** and should not be treated as such
- If we are **mindful of the gap** and keep it as small as possible during development, the PoC is much more likely to become a product
- By adopting best practices regarding **responsible AI** early during PoC development can help **anticipate and avoid larger issues** later in the process



Thank you for your attention!

Nicolas Schulz

*[schulz@aric-hamburg.de](mailto:schulz@aric-hamburg.de)*

Artificial Intelligence Center Hamburg (ARIC) e.V.  
Van-der-Smissen-Straße 9  
22767 Hamburg

[www.aric-hamburg.de](http://www.aric-hamburg.de)

